

FIELD UNIT FOR 1 SMOKE CONTROL DAMPER

- Connects 1 smoke control damper to the bus
- Provides a plug connection for a 24V actuator with ST-plug, such as a BEN24ST or BLE24ST...
- Has a predefined address (no addressing required during system commissioning)
- AC 230 V mains power



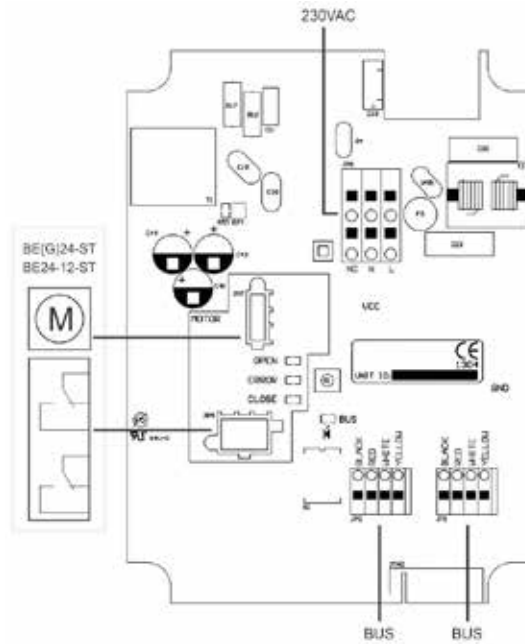
TECHNICAL DATA

| ELECTRICAL DATA | |
|------------------------------|--|
| Nominal voltage | AC 230 V 50/60 Hz |
| Nominal voltage range | AC 100 ... 230 V |
| For wire sizing | 18 VA |
| Power consumption from mains | Actuator consumption + 300 mW |
| Power consumption from bus | 5 mW |
| Connecting | Power supply terminal 2 x 3 x max. 2.5 mm ² (min. 0.5 mm ²) Actuator outputs Plug, 6 poles Actuator power supply Plug, 3 poles Bus terminal 2 x 4 x 1.5 mm ² wire |
| SAFETY | |
| Protection class | Class II (all insulated) |
| Degree of protection | IP54 |
| EMC | CE according to 2004/108/EC |
| Low-voltage-directive | CE according to 2006/95/EC |
| Ambient humidity range | IEC 60730-1 max. 95 % |
| Ambient temperature range | -20 ... +60 °C |
| Non-operating temperature | -40 ... +85 °C |
| Maintenance | Maintenance-free |
| DIMENSIONS / WEIGHT | |
| Dimensions | 154 x 114 x 77 mm |
| Weight | 400 g |

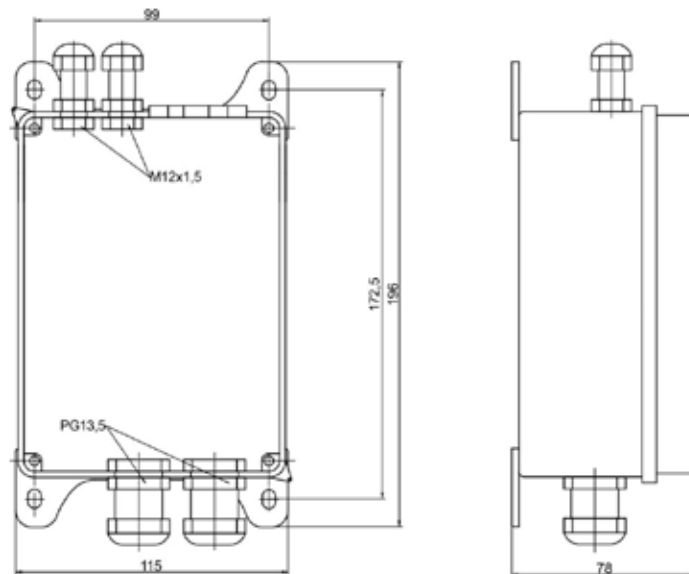
PRODUCT FEATURES

| | |
|--|---|
| Control of one smoke control damper actuator | ZENiX 1SDST is used for controlling one 24 V smoke damper actuator with ST-plug. The unit is connected to the ZENiX controller module via a 4 wire bus communication. |
| Connection | The ST actuators are equipped with plug connectors that can be plugged directly into the ZENiX 1SDST unit. |
| Isolation | The actuator is isolated from mains by a transformer. |
| Predefined address | Each unit has a predefined address, no addressing required. |
| Work without 230 V | ZENiX 1SDST unit is able to work without 230 V: it will only send data about actuator position to the ZENiX controller and will not be able to change the position of the smoke damper. |

WIRING AND RESOURCES



DIMENSIONS AND MOUNTING



SAFETY NOTES



- The device is not allowed to be used outside the specified field of application, especially in aircraft or in any other airborne means of transport.
- Caution: Power supply voltage!
- It may only be installed by suitably trained personnel. Any legal regulations or regulations issued by authorities must be observed during assembly.
- The device may only be opened at the manufacturer's site. It does not contain any parts that can be replaced or repaired by the user.
- The device contains electrical and electronic components and is not allowed to be disposed of as household refuse. All locally valid regulations and requirements must be observed.

If the product is manipulated in any other way than described, Rf-Technologies will decline any responsibility and the guarantee will immediately expire!

